

## Accommodation

### Adapted 1-Bedroom Executive Apartment - Redwood Apartment 36

Approximate Floorplan



## Parking

Designated accessible parking is provided close to the Apartments.

## Access

The main entrance for the Redwood Apartments has level access over a bridge, through double leaf manually operated doors. To access the accommodation, there is a passenger lift which will take you to the ground floor. Access can also be gained through the rear of the apartment; a ramp is provided. A small threshold of 15mm is present through the patio doors. There is access for guests using wheelchairs throughout the accommodation.

## **Adapted 1-Bedroom Executive Apartment - Redwood Apartment 36**

### **Accessible Bedroom**

There are two single beds with space beneath the beds to allow a hoist to be used at the bedside. One of the two single beds is a Volker Electric bed with adjustable and retractable bed sides with wheels to aid movement.

A portable hoist is **not** provided within the accommodation. If one is required, CenterParcs will arrange for the hire of a hoist at no extra cost, please contact us in advance of your stay to make arrangements.

### **Accessible Bathroom**

The accessible bathroom has an inward opening door and provides accessible shower (with flip down seat), wash hand basin and toilet. The toilet may require skilled assistance for use due to its peninsular layout. An emergency alarm pull cord is provided at the shower and toilet.

Emergency alarms are audible throughout the accommodation but are not connected to a central location.



## **Adapted 1-Bedroom Executive Apartment - Redwood Apartment 36**

### **Kitchen**

The 2-ring hob is at a counter height of 900mm. A further work surface at 800mm height is provided. The microwave is accessible at 900mm height.

The fridge with freezer compartment is a standard under counter appliance. The sink is at 900mm (standard height) with easy access taps, however, there are cupboards underneath. There are enough floor-based cupboards to provide accessible storage. However, there are also wall mounted cupboards which are not accessible from a wheelchair.



### **Living Accommodation**

There is seating for all occupants of the apartment in the lounge/dining area. There is also space within the lounge area for a wheelchair.

## Adapted 2-Bedroom Woodland Accommodation – L734



Approximate Floorplan

Lodge 734 is a level access single storey accommodation with two bedrooms. The accessible bedroom is provided with an accessible en-suite bathroom, a further bathroom with no adaptations, accessible living accommodation and kitchen with level access to the rear patio.

### Parking

Designated parking is provided close to the Lodge.

### Access

There is access for guests using wheelchairs throughout the accommodation. This includes into the other bedroom, although there is limited manoeuvring space once in the bedroom. There is level access to the patio via the patio door in the lounge area.



## Adapted 2-Bedroom Woodland Accommodation – L734

### Accessible Bedroom

There are two single beds with space beneath the beds to allow a hoist to be used at the bed. One of the two single beds is a Volker Electric bed with adjustable and retractable bed sides with wheels to aid movement.

A portable hoist is **not** provided within the accommodation. If one is required Center Parcs will arrange for the hire of a hoist at no extra cost, please contact us in advance of your stay to make arrangements.

An emergency alarm pull cord is present. There is also an external door to the bedroom, which can only be opened from the inside.



## **Adapted 2-Bedroom Woodland Accommodation – L734**

### **Accessible Bathroom**

The accessible bathroom has an outward opening door and provides accessible shower (with flip down seat), wash basin and toilet.

The toilet may require skilled assistance for use due to its peninsular layout. An emergency alarm pull cord is provided at the shower and toilet.

Emergency alarms are audible throughout the Lodge but are not connected to a central location.



## **Adapted 2-Bedroom Woodland Accommodation – L734**

### **Kitchen**

The hob is at a counter height of 900mm. A further work surface at 800mm height is provided. The microwave is accessible at 900mm height.

The oven is at low level with a side opening door. The fridge with freezer compartment is a standard under counter appliance. The sink is at 900mm (standard height), however, there are cupboards underneath.

There are enough floor-based cupboards to provide accessible storage. However, there are also wall mounted cupboards which are not accessible from a wheelchair.



### **Living Accommodation**

There is seating for all occupants of the Lodge in the lounge area. In addition, a high seated firm chair is available within the accommodation. There is also space within the lounge area for a wheelchair.

## Adapted 3-Bedroom Executive Accommodation L109, 114

Approximate Floorplan



Lodges 109 & 114 are level access single storey executive accommodation with three bedrooms. The accessible bedroom is provided with an accessible en suite bathroom. The further two bedrooms also have en suite bathrooms with no adaptations. An accessible living room and kitchen with access to the rear patio and sauna are also provided.

### Parking

Designated parking is provided close to the Lodge.

### Access

There is access for guests using wheelchairs throughout the ground floor of the accommodation and patio area.



## Adapted 3-Bedroom Executive Accommodation 109, 114

### Accessible Bedroom

There are two single beds with space beneath the beds to allow a hoist to be used at the bed. One of the two single beds is a Volker Electric bed with adjustable and retractable bed sides with wheels to aid movement.

A portable hoist is **not** provided within the accommodation. If one is required Center Parcs will arrange for the hire of a hoist at no extra cost please contact us in advance of your stay to make arrangements.

An emergency alarm pull cord is present.



## **Adapted 3-Bedroom Executive Accommodation 109, 114**

### **Accessible Bathroom**

The accessible bathroom has outward opening doors and provides accessible shower (with flip down seat) wash hand basin and toilet. An emergency alarm pull cord is provided at the shower and the toilet. This bathroom is en suite.

Emergency alarms are audible throughout the Lodge but are not connected to a central location.



## **Adapted 3-Bedroom Executive Accommodation 109, 114**

### **Kitchen**

The hob is at counter height 900mm. A further work surface at 800mm height is provided. The microwave is accessible at 900mm height.

The oven is at low level with a side opening door. The fridge with freezer compartment is slightly raised to aid accessibility. The sink is at 900mm (standard height), however, there are cupboards underneath.

There are enough floor-based cupboards to provide accessible storage. However, there are also wall mounted cupboards which are not accessible from a wheelchair.



### **Living Accommodation**

There is seating for all occupants of the Lodge in the lounge area. In addition, a high seated firm chair is available within the accommodation. There is also space within the lounge area for a person using a wheelchair to be able to remain seated in the wheelchair.

## **Adapted 3-Bedroom Executive Accommodation 109, 114**

### **Standard Bathroom Whirl Pool Baths**

Other bedrooms within the accommodation have en suite bathrooms, where a whirlpool bath may be fitted.

If the jets in the whirlpool baths are continually covered for significant lengths of time, they become hot.

This makes the baths unsuitable for guest with a sensory impairment who would fail to detect the gradual warming only for very short periods of use.

For guests with lower limb mobility restrictions (or particularly for those with lower limb mobility restrictions accompanied by sensory impairment) extreme care must be exercised in using the aeration function on the baths.

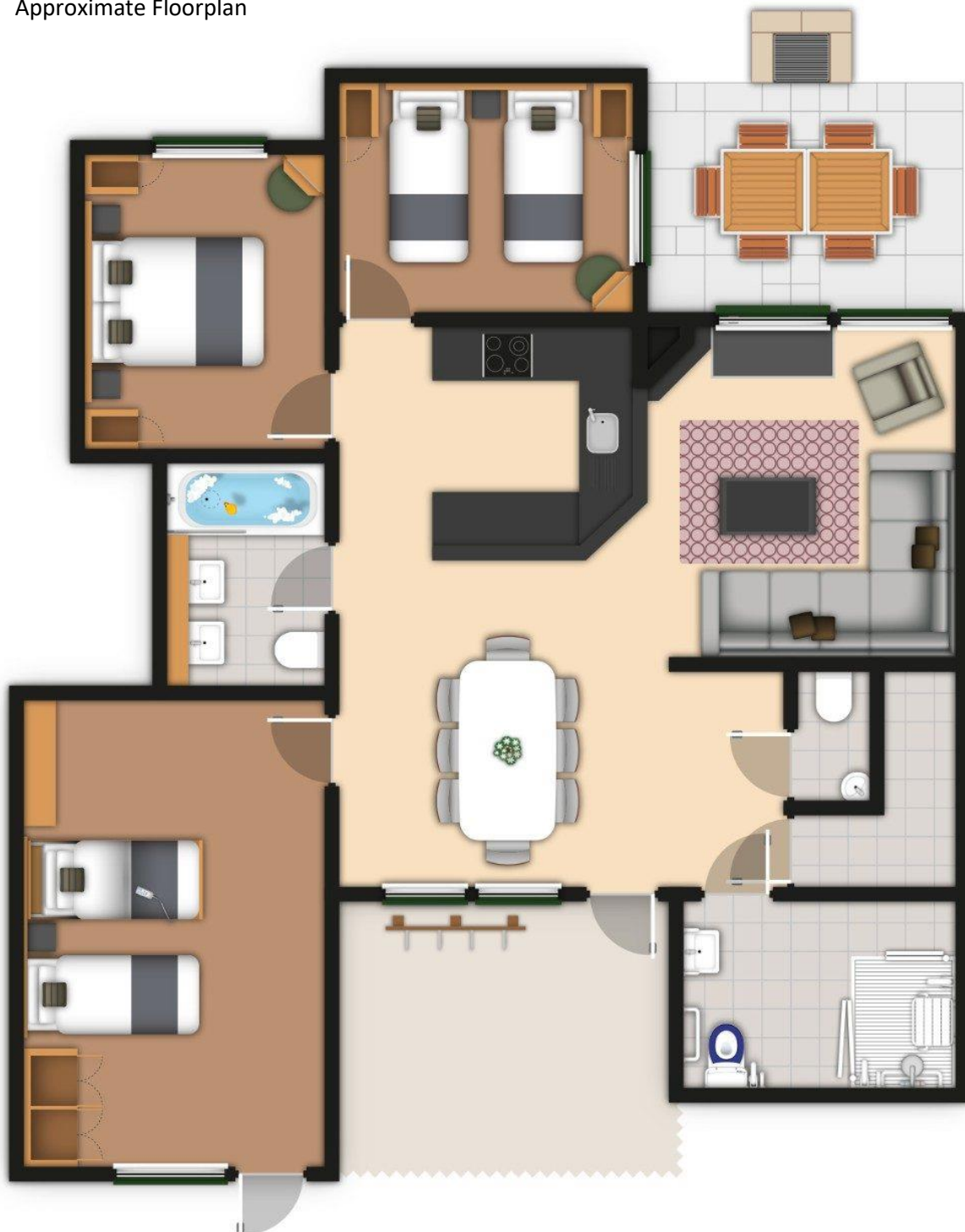
### **Sauna**

The sauna & shower have level access and doors which allow wheelchair entry.

Wheelchairs with metal fittings will become sufficiently hot to burn skin in the sauna. Guests should be able to transfer from their wheelchairs in order to use these facilities.

## Adapted 3-bedroom Woodland Accommodation 241, 247, 251

Approximate Floorplan



Lodges 241, 247 & 251 provide level single storey Woodland Accommodation with three bedrooms, one of which will be more accessible, an accessible bathroom, a further bathroom with no adaptations, accessible living accommodation and kitchen.



## **Adapted 3-bedroom Woodland Accommodation 241, 247, 251**

### **Parking**

Designated parking is provided close to the Lodge.

### **Access**

There is access for guests using wheelchairs throughout the accommodation. This includes into the other 3 bedrooms, although there is limited manoeuvring space once in the bedrooms.

There is level access to the patio via the patio door in the lounge area.

### **Accessible Bedroom**

There are two single beds with space beneath the beds to allow a hoist to be used at the bed. One of the two single beds is a Volker Electric bed with adjustable and retractable bed sides with wheels to aid movement.



A portable hoist is **not** provided within the accommodation. If one is required Center Parcs will arrange for the hire of a hoist

## **Adapted 3-bedroom Woodland Accommodation 241, 247, 251**

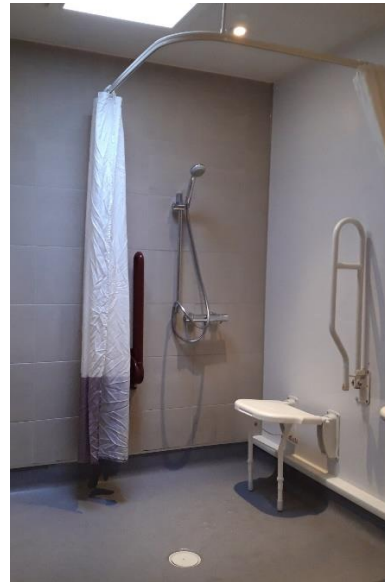
at no extra cost, please contact us in advance of your stay to make arrangements.

An emergency alarm pull cord is present. There is also an external door to the bedroom, which can only be opened from the inside.

### **Accessible Bathroom**

The accessible bathroom has an outward opening door and provides accessible shower (with flip down seat), wash basin and toilet. The toilet may require skilled assistance for use due to its peninsular layout. An emergency alarm pull cord is provided at the shower and toilet.

Emergency alarms are audible throughout the Lodge but are not connected to a central location.



## **Adapted 3-bedroom Woodland Accommodation 241, 247, 251**

### **Kitchen**

The hob is at a counter height of 900mm. A further work surface at 800mm height is provided. The microwave is accessible at 900mm height.

The oven is at low level with a side opening door. The fridge with freezer compartment is a standard under counter appliance. The sink is at 900mm (standard height), however, there are cupboards underneath.

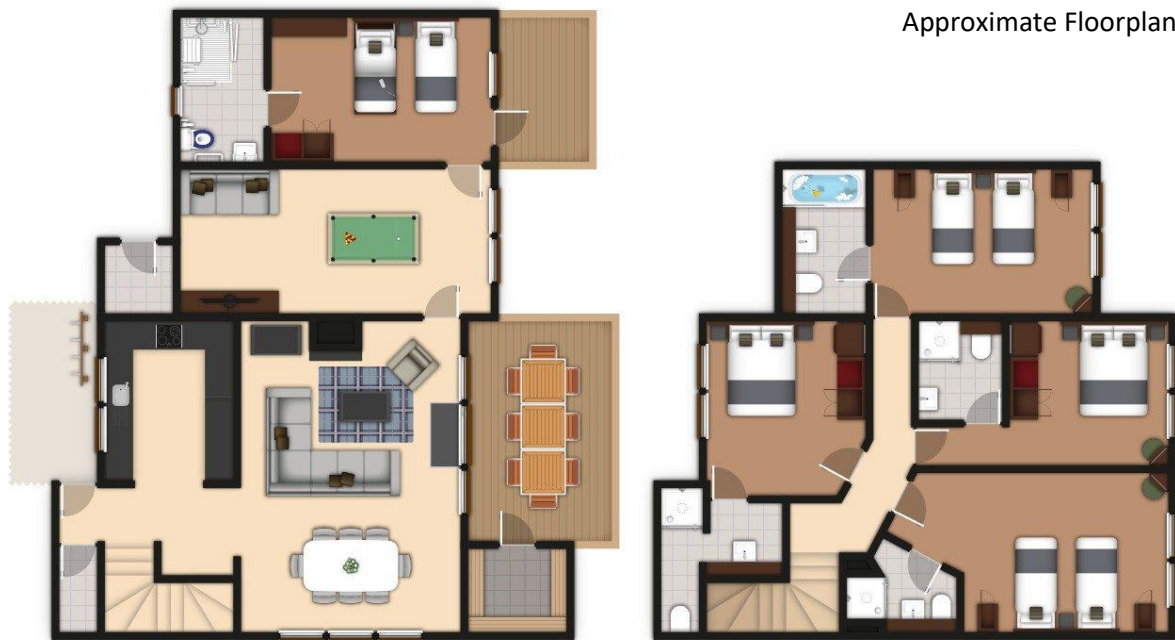
There are enough floor-based cupboards to provide accessible storage. However, there are also wall mounted cupboards which are not accessible from a wheelchair.



### **Living Accommodation**

There is seating for all occupants of the Lodge in the lounge area. In addition, a high seated firm chair is available within the accommodation. There is also space within the lounge area for a wheelchair.

## Adapted 4-Bedroom Executive Accommodation L934



Lodge 934 provides two storey Executive Accommodation with four bedrooms. Accessible living room and kitchen is located on the ground floor, with access to the rear balcony & Sauna. The accessible bedroom with en suite accessible bathroom is located on the ground floor through the games room. Further en suite bathrooms with no adaptations are available on the first floor. The first floor is not accessible by wheelchair.

### **Parking**

Designated accessible parking is provided close to the Lodge.

### **Access**

There is access for guests using wheelchairs throughout the ground floor of the accommodation and rear balcony area.

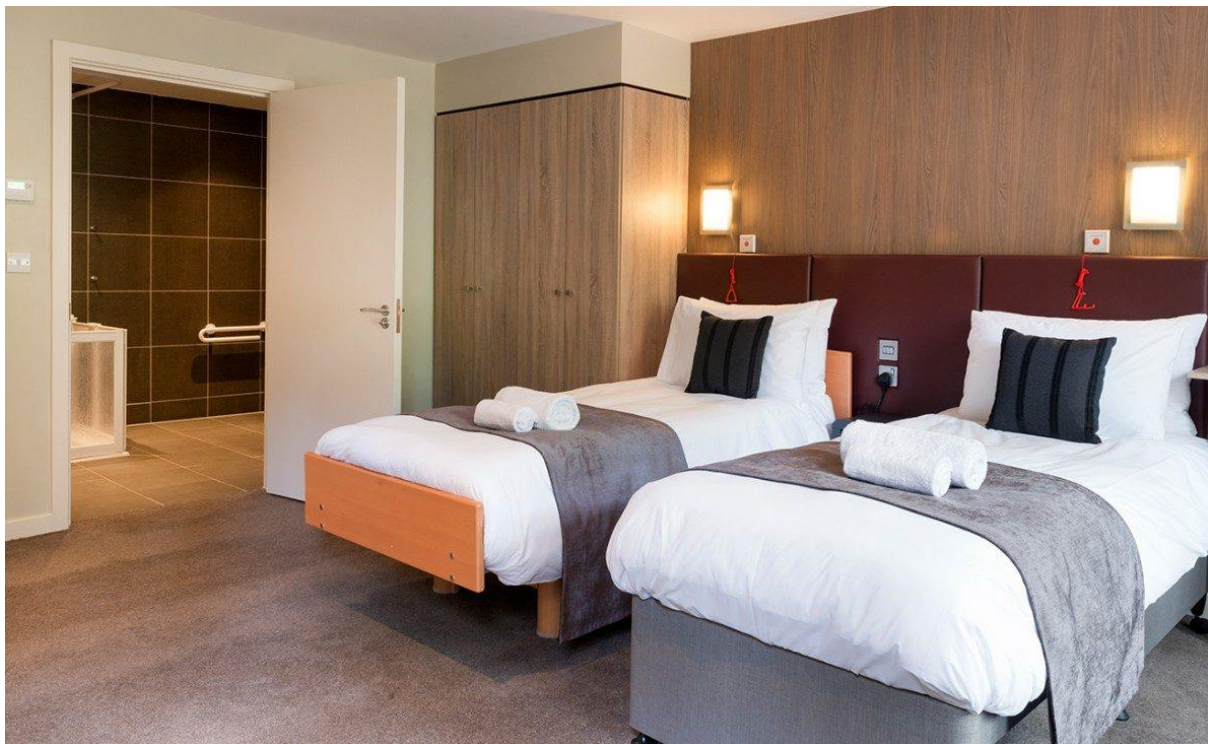


## Adapted 4-Bedroom Executive Accommodation L934

### Accessible Bedroom

Located on the ground floor, there are two single beds with space beneath the beds to allow a hoist to be used at the bed. One of the single beds is a Volker Electric bed with adjustable and retractable bed sides with wheels to aid movement. A portable hoist is **not** provided within the accommodation. If one is required Center Parcs will arrange for the hire of a hoist at no extra cost please contact us in advance of your stay to make arrangements.

An emergency alarm pull cord is present.



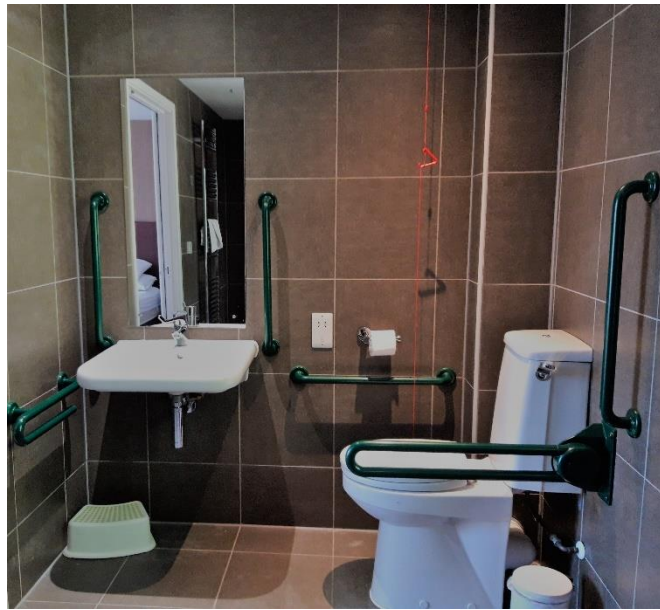


## **Adapted 4-Bedroom Executive Accommodation L934**

### **Accessible Bathroom**

The accessible bathroom has outward opening doors and provides accessible shower (with flip down seat) wash hand basin and toilet. An emergency alarm pull cord is provided at the shower and the toilet. This bathroom is en suite.

Emergency alarms are audible throughout the Lodge but are not connected to a central location.



## **Adapted 4-Bedroom Executive Accommodation L934**

### **Kitchen**

The hob is at counter height 900mm. A further work surface at 800mm height is provided. The microwave is accessible at 900mm height.

The oven is at low level with a side opening door. The fridge with freezer compartment is slightly raised to aid accessibility. The sink is at 900mm (standard height), however, there are cupboards underneath.

There are enough floor-based cupboards to provide accessible storage. However, there are also wall mounted cupboards which are not accessible from a wheelchair.



## **Adapted 4-Bedroom Executive Accommodation L934**

### **Living Accommodation**

There is seating for all occupants of the Lodge in the lounge area. In addition, a high seated firm chair is available within the accommodation. There is also space within the lounge area for a person using a wheelchair to be able to remain seated in the wheelchair.

### **Standard Bathroom Whirl Pool Baths**

Other standard bedrooms within the accommodation have en suite bathrooms where a whirlpool bath is fitted.

If the jets in the whirlpool baths are continually covered for significant lengths of time, they become hot.

This makes the baths unsuitable for guest with a sensory impairment who would fail to detect the gradual warming only for very short periods of use.

For guests with lower limb mobility restrictions (or particularly for those with lower limb mobility restrictions accompanied by sensory impairment) extreme care must be exercised in using the aeration function on the baths.

### **Sauna**

The sauna has level access and doors which allow wheelchair entry.

Wheelchairs with metal fittings will become sufficiently hot to burn skin in the sauna. Guests should be able to transfer from their wheelchairs in order to use these facilities.

## Adapted 4-Bedroom Exclusive Accommodation –L947

Approximate Floorplan



Lodge 947 provides two storey Executive Accommodation with four bedrooms. Accessible living room and kitchen is located on the ground floor, with access to the rear patio, Hot Tub Spa, Steam Room and Sauna.

The accessible bedroom with en suite accessible bathroom is located on the ground floor through the games room. Further en suite bathrooms with no adaptations are available on the ground and first floor. The first floor is not accessible by wheelchair.



## **Adapted 4-Bedroom Exclusive Accommodation – L947**

### **Parking**

Designated accessible parking is provided close to the Lodge.

### **Access**

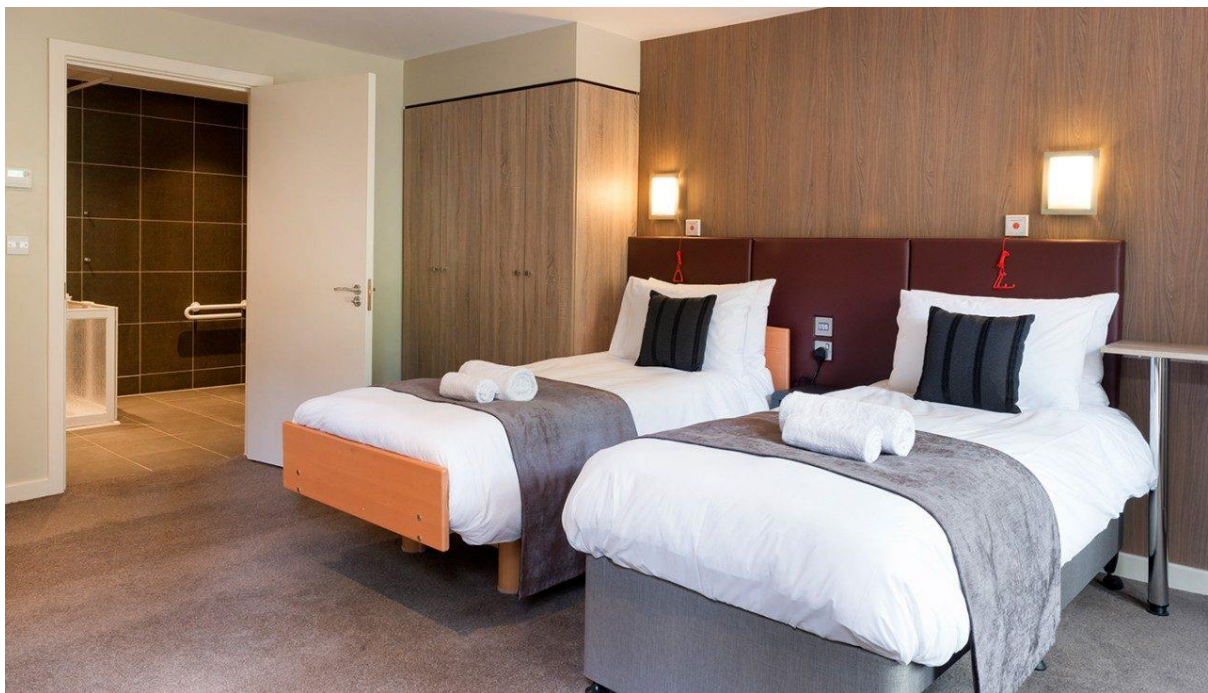
There is access for guests using wheelchairs throughout the ground floor of the accommodation and patio area and Hot Tub

### **Accessible Bedroom**

There are two single beds with space beneath the beds to allow a hoist to be used at the bed. One of the two single beds is a Volker Electric bed with adjustable and retractable bed sides with wheels to aid movement.

A portable hoist is **not** provided within the accommodation. If one is required Center Parcs will arrange for the hire of a hoist at no extra cost please contact us ahead of your stay to make arrangements.

An emergency alarm pull cord is present.



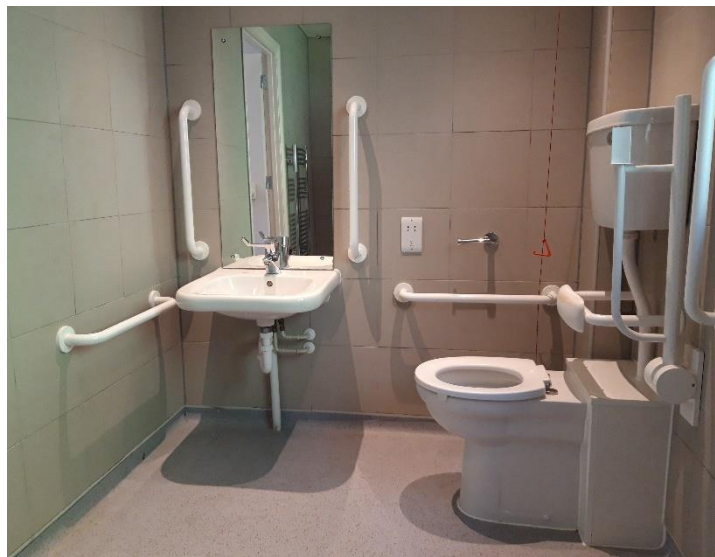


## **Adapted 4-Bedroom Exclusive Accommodation –L947**

### **Accessible Bathroom**

The accessible bathroom has outward opening doors and provides accessible shower (with flip down seat) wash hand basin and toilet. An emergency alarm pull cord is provided at the shower and the toilet. This bathroom is en suite.

Emergency alarms are audible throughout the Lodge but are not connected to a central location.



## **Adapted 4-Bedroom Exclusive Accommodation –L947**

### **Kitchen**

The hob is at counter height 900mm. A further work surface at 800mm height is provided. The microwave is accessible at 900mm height.

The oven is at low level with a side opening door. The fridge with freezer compartment is slightly raised to aid accessibility. The sink is at 900mm (standard height), however, there are cupboards underneath.

There are enough floor-based cupboards to provide accessible storage. However, there are also wall mounted cupboards which are not accessible from a wheelchair.



## **Adapted 4-Bedroom Exclusive Accommodation –L947**

### **Living Accommodation**

There is seating for all occupants of the Lodge in the lounge area. In addition, a high seated firm chair is available within the accommodation. There is also space within the lounge area for a person using a wheelchair to be able to remain seated in the wheelchair.

### **Standard Bathroom Whirl Pool Baths**

Other bedrooms within the accommodation have en suite bathrooms, where a whirlpool bath may be fitted.

If the jets in the whirlpool baths are continually covered for significant lengths of time, they become hot.

This makes the baths unsuitable for guest with a sensory impairment who would fail to detect the gradual warming only for very short periods of use.

For guests with lower limb mobility restrictions (or particularly for those with lower limb mobility restrictions accompanied by sensory impairment) extreme care must be exercised in using the aeration function on the baths.

## **Adapted 4-Bedroom Exclusive Accommodation – L947**

### **Sauna, Steam Room, Shower & Hot Tub Spa**

The sauna, steam room and power shower have level access and doors which allow wheelchair entry. Wheelchairs with metal fittings will become sufficiently hot to burn in the sauna and steam room. Guests should be able to transfer from their wheelchairs in order to use these facilities.

The external hot tub spa is provided with an Oxford 140 Dipper hoist. The maximum safe working load is 140 Kg (308lbs).



## **Accommodation Without Adaptations**

There is a variety of Lodge styles and types, ranging from one-bedroom Apartments, through to four-bedroom Exclusive Lodges.

There is a mixture of single storey and two storey accommodation.

Due to the forest location, paths to Lodges may be narrow, long, steep or stepped.

Steep access lodges – 155-158, 165-168, 465-472.

Stepped access lodges – 174, 393-394, 434-435, 914-918.

Parking for these Lodges is in the main car park (except for some Exclusive and Executive accommodation).

Internally, accommodation may not provide wheelchair access into any or all the rooms. Manoeuvring space is restricted, and bathrooms and kitchens are not adapted. If you require further information upon a particular Lodge and its location, please enquire at time of booking.

### **Whirl Pool Baths**

If the jets in the Whirl Pool baths which are fitted in some of our accommodation are continually covered for significant lengths of time, they become hot.

This may make the bath unsuitable for guest with a sensory impairment who would fail to detect the gradual warming without supervision.

For guests with lower limb mobility restrictions (or particularly for those with lower limb mobility restrictions accompanied by sensory impairment) extreme care must be exercised in using the aeration function on the baths.

## Treehouses - L962,963 & 964



### Access

Our treehouses have level access into the accommodation.

Each Treehouse has a rear terrace and games room with level access.

## **Parking**

Designated parking is provided close to the Lodge.

## **Bedrooms**

There are four en suite bedrooms, one double room upstairs and one double and two twin rooms on the ground floor, accessible from the living area. Wheelchair users may experience difficulty in manoeuvring around these rooms due to limited turning space.

## **Bathrooms/Toilets**

All bedrooms have en suite bathrooms. There is also a toilet leading from the main entrance hall. These facilities are not adapted.

## **Kitchen**

The kitchen affords basic manoeuvring space in a wheelchair. However, it is not designed for adapted living.

## **Living Area**

There is seating for all occupants of the accommodation in the lounge and games room. There is also enough space within the lounge area and games room for a wheelchair to manoeuvre.

## **Hot Tub & Sauna**

On the rear terrace there is access to the Hot tub and Sauna, both facilities are not designed for adapted living.

## **Treehouse Host**

This accommodation is serviced by a Treehouse Host who will assist in making your stay as comfortable as possible within the physical constraints of the accommodation. Please ask when making your booking.