

47 Foresters Lane

47 Foresters Lane provides accessible two storey accommodation with four bedrooms.

The makeup of this lodge consists of a standard double room and one standard twin room on the first floor and one twin room including an adjustable bed and one standard double room on the ground floor.

Emergency alarms are audible throughout the lodge but are not connected to a central location.

The facilities provided are sufficient for eight adults.

Parking

Designated accessible parking is provided in front of the lodge for one vehicle.



Access

The door to the entrance of the lodge is 90 cm and the chain height is 155 cm.

There is access for guests using wheelchairs throughout the accommodation. This includes into the other ground floor bedroom, although there is limited manoeuvring space once in the bedroom.

There is a lip on the patio access of 3 cm and the patio door is of an opening of 70 cm wide.

Living area

There is seating for all occupants of the lodge in the lounge area. In addition, a high seated firm chair is available within the accommodation. There is also space within the lounge area for a wheelchair.

The gap between the sofa and the wall is approx. 110 cm wide.

The dining table has an adapted position that provides sufficient knee space for a guest using a wheelchair.



Kitchen

The hob is at a standard height, the oven is electric and has a side opening door.

There is a work surface at 75 cm. The free-standing microwave, toaster and kettle are on this work surface to assist with access. There are sufficient floor-based cupboards to provide accessible storage. You may need to move what you decide is needed into these cupboards to provide accessible storage. However, there are also wall mounted cupboards which are not accessible from a wheelchair. The tap for the sink is on the nearest side for the user. The fridge is at a lower level. The kitchen has a turning circle of approx. 203 cm x 255 cm. There are work surface height sockets.



Accessible bedroom

Is provided with one single bed and one Bakare Volker 3080 adjustable bed there is space beneath the adjustable bed to allow a hoist to be used at the bed. A portable hoist is **not** provided within the accommodation. If one is required Center Parks will arrange for the hire of a hoist at no extra cost, please contact us in advance of your stay to make arrangements. The bed transfer is from the right-hand side.

The bedroom door opening, and the emergency door opening are both a width of 90cm.

There is a TV provided in this room, and the wardrobe has a lower rail height of 93 cm and a higher rail height of 144 cm from the ground.



Adapted bathroom

The accessible bathroom provides an accessible shower and flip down seat which is at the height of 48 cm, hand basin and toilet.

The toilet is left hand transfer. The toilet seat height is 48cm and the distance between the toilet and the sink is 26 cm and the sink height is 72 cm. The shower transfer is from the right-hand side. The shower head height can be adjusted and there is an emergency pull cord located next to the shower and the toilet.

The turning circle in the bathroom is approx. 140 x 140 cm.

91 Three Oaks

91 Three Oaks provides accessible two storey exclusive accommodation with four bedrooms.

The makeup of this lodge consists of one double room with an en-suite shower room and TV and one twin room including an adjustable bed on the ground floor. The first floor consists of one double room with an en-suite bathroom and TV and one standard twin room with an en-suite shower room and TV.

Emergency alarms are audible throughout the lodge but are not connected to a central location.

The facilities provided are sufficient for eight adults.

Parking

Designated accessible parking is provided in front of the lodge for one vehicle.



Access

The door to the entrance of the lodge is 90 cm and the chain height is 162 cm.

There is access for guests using wheelchairs throughout the accommodation. This includes into the other ground floor bedroom, although there is limited manoeuvring space once in the bedroom.

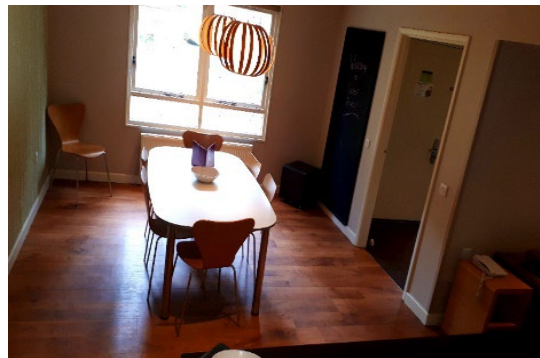
There is access to the patio via the living area which has a lip of 2cm. The patio door has an opening of 80 cm.

Living area

There is seating for all occupants of the lodge in the lounge area. In addition, a high seated firm chair is available within the accommodation. There is also space within the lounge area for a wheelchair.

The gap between the sofa and the wall is approx. 120 cm wide.

The dining table has an adapted position that provides sufficient knee space for a guest using a wheelchair.



Kitchen

The hob is at a standard height, the oven is electric and has a side opening door.

There is a work surface at 75 cm. The free-standing microwave, toaster and kettle are on this work surface to assist with access. There are sufficient floor-based cupboards to provide accessible storage. You may need to move what you decide is needed into these cupboards to provide accessible storage. However, there are also wall mounted cupboards which are not accessible from a wheelchair. The tap for the sink is on the nearest side for the user. The fridge is at a lower level. The kitchen has a turning circle of approx. 170 cm x 152 cm. There are work surface height sockets.



Accessible bedroom

Is provided with one single bed and one Bakare Volker 3080 adjustable bed there is space beneath the adjustable bed to allow a hoist to be used at the bed. A portable hoist is **not** provided within the accommodation. If one is required Center Parks will arrange for the hire of a hoist at no extra cost, please contact us in advance of your stay to make arrangements. An emergency pull cord is present and a TV is provided in this room. The bed transfer can be from the left- or right-hand side. The wardrobe has a rail height of 156 cm.



En-suite adapted bathroom

The accessible en-suite bathroom provides an accessible shower and flip down seat which is at the height of 48 cm, hand basin and toilet.

The toilet is right hand transfer. The toilet seat height is 48cm and the distance between the toilet and the sink is 88 cm and the sink height is 74 cm. The shower transfer is from the right-hand side. The shower head height can be adjusted and there is an emergency pull cord located between the toilet and sink..

The turning circle in the bathroom is approx. 122 x 252 cm.



Sauna, Steam Room Shower & Hot Tub

The sauna, steam room and power shower have level access and doors which allow wheelchair entry. Wheelchairs with metal fittings will become sufficiently hot to burn in the sauna and steam room. Guests should be able to transfer from their wheelchair in order to use the facilities.

The Sauna seat height is 56 cm.

The external hot tub is provided with an Oxford 140 Dipperlift hoist. Slings are not provided, please ensure you bring these with you if required. The maximum safe working load is 140 kg.



33 Lakeside Apartments

This accessible exclusive apartment provides single level accommodation on the ground floor. The make up of the apartment is a studio bedroom area that sleeps two people, accessible living accommodation and kitchen.

Parking

Designated accessible parking is provided next to the apartment for one vehicle.



Access

There is access for guests using wheelchairs throughout the accommodation, the door to the entrance of the lodge is 87 cm and the chain height is 145 cm.

The patio is accessible via a door width of 87cm.

Accessible bedroom

There is a standard single bed and one Baker Volker 3080 bed provided. There is space beneath the beds to allow a hoist to be used at the bed. A portable hoist is **not** provided within the accommodation. If one is required Center Parcs will arrange for the hire of a hoist at no extra cost, please contact us in advance of your stay to make arrangements.

An emergency alarm pull cord is present.

Emergency alarms are audible throughout the lodge but are not connected to a central location.



Living area

There is seating for two in the lounge area. In addition, a high seated firm chair is available within the accommodation. There is also space within the lounge area for a person using a wheelchair to remain seated in their wheelchair.

The dining table has an adapted position that provides sufficient knee space for a guest using a wheelchair.



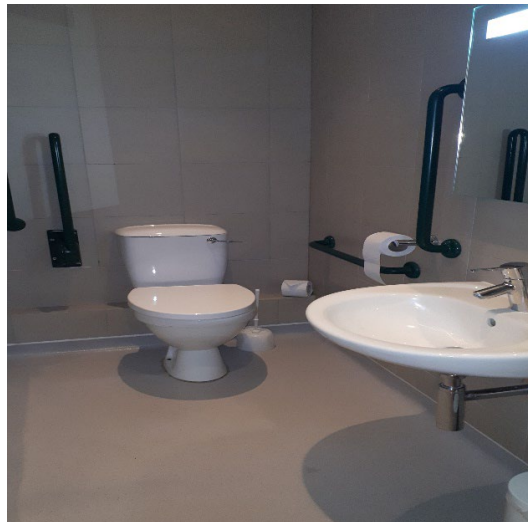
En-suite adapted bathroom

The accessible en-suite bathroom provides an accessible shower and flip down seat which is at the height of 48 cm, hand basin and toilet.

The toilet is left hand transfer. The toilet seat height is 45 cm the distance between the toilet and the sink is 58 cm and the sink height is 70 cm. The shower transfer is from the right-hand side. The shower head height can be adjusted.

An emergency pull cord is accessible from the toilet and the shower

The turning circle in the bathroom is approx. 230 cm x 156 cm.



Kitchen

The hob is located above the oven. The oven is electric and has a side opening door. There is a work surface at a height of 75 cm. The free-standing microwave, toaster and kettle are on this work surface to assist with access. There are sufficient floor-based cupboards to provide accessible storage. You may need to move what you decide is needed into these cupboards to provide accessible storage. However, there are also wall mounted cupboards which are not accessible from a wheelchair. The tap for the sink is on the nearest side for the user. The fridge is at a lower level. There is work surface height sockets. The kitchen turning circle is approx. 172 cm x 195 cm.

