

14 Moorland View

14 Moorland View provides partially accessible single storey two-bedroom accommodation.

This lodge consists of two bedrooms and sleeps four persons. The makeup of the lodge is one double room and one twin room which includes a standard single bed with an adjustable bed.

Emergency alarms are audible throughout the lodge but are not connected to a central location.

Parking

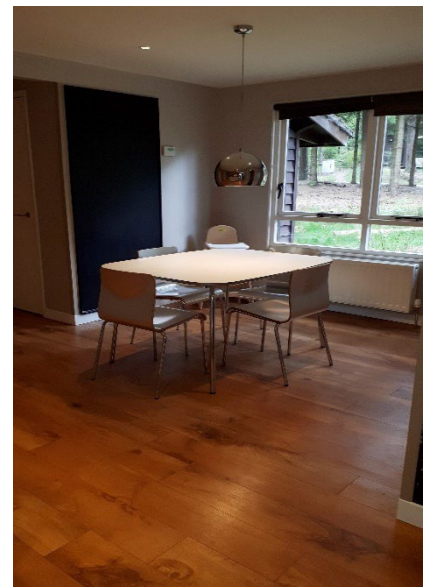
Designated accessible parking is provided in front of the lodge for one vehicle.



Access

The entrance into the lodge is ramped and the door width is 80 cm with a chain height of 163 cm.

There is access for guests using wheelchairs throughout the accommodation. This includes into the other bedroom, although there is limited manoeuvring space once in the bedroom.



There is a ramped access to the patio via the rear adapted bedroom. The door width is 75cm and the lock is at a height of 95 cm.



Living area

There is seating for all occupants of the lodge in the lounge area. In addition, a high seated firm chair is available within the accommodation. The gap between the sofa and the wall is approx. 138 cm wide and there is space within the lounge area for a wheelchair.

Guests using a wheelchair can be seated at the dining table.



Kitchen

The hob is located above the oven. The oven is electric and has a side opening door. There is a work surface at a height of 85 cm. The free-standing microwave, toaster and kettle are on this work surface to assist with access. There are sufficient floor-based cupboards to provide accessible storage. You may need to move what you decide is needed into these cupboards to provide accessible storage. However, there are also wall mounted cupboards which are not accessible from a wheelchair. The tap for the sink is on the nearest side for the user. The fridge is at a lower level. The kitchen is 230 cm x 175 cm.

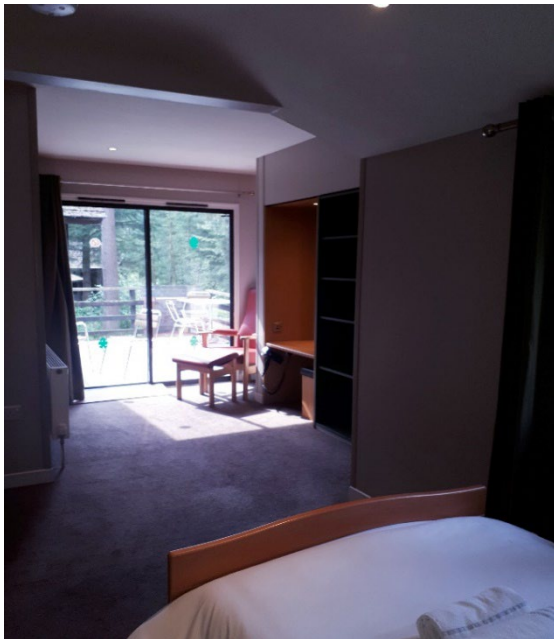


Accessible bedroom

Is provided with a Bakare Volker 3080 adjustable electric bed there is space beneath the adjustable bed to allow a hoist to be used at the bed. A portable hoist is **not** provided within the accommodation. If one is required Center Parcs will arrange for the hire of a hoist at no extra cost, please contact us in advance of your stay to make arrangements. The bed transfer is from the right-hand side.

The bedroom door opening is 90 cm. There is a TV in the room and the bedside table is 72 cm in height. There are two emergency pull cords situated next to each bed. The wardrobe rail height is 145 cm from the ground.

There is a lock on the adapted bedroom patio door at 174 cm from the floor and the width of the door is 80 cm wide.





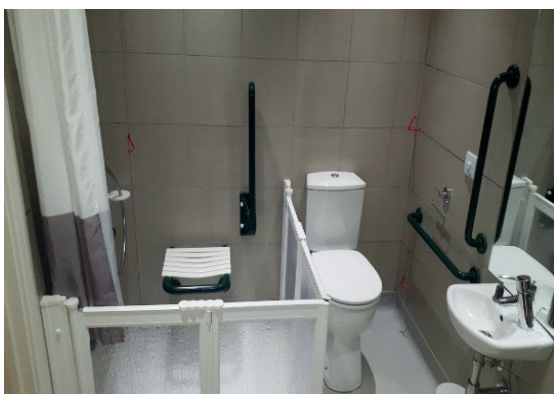
En-suite adapted bathroom

The accessible bathroom door is an outwards opening door with a width of 90 cm. The accessible en-suite bathroom provides an accessible shower and flip down seat which is at the height of 55 cm, hand basin, bath and toilet.

The toilet is right hand transfer. The toilet seat height is 59 cm and the distance between the toilet and the sink is 44 cm and the sink height is 82 cm. The shower transfer is from the left-hand side. The shower head height can be adjusted.

Emergency pull cords are situated next to the toilet and the shower.

The turning circle in the bathroom is approx. 160 cm x 108 cm.



17 Moorland View

17 Moorland View provides accessible single storey three-bedroom accommodation.

This lodge consists of three bedrooms and sleeps six persons. The makeup of the lodge is one double room, one standard twin room and one twin room which includes a standard single bed with an adjustable bed.

Emergency alarms are audible throughout the lodge but are not connected to a central location.

Parking

Designated accessible parking is provided adjacent to lodge for one vehicle.



Access

There is access for guests using wheelchairs throughout the accommodation, the door to the entrance of the lodge is 90 cm and the chain height is 165cm.

This includes access into the other bedrooms although there is limited manoeuvring space once in the non-adapted bedrooms.

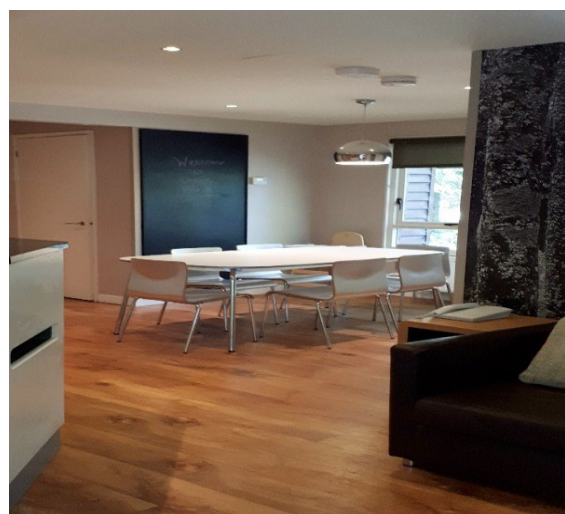
The access to the patio has a 2cm lip and the patio door is 70cm wide.



Living area

There is seating for all occupants of the lodge in the lounge area. In addition, a high seated firm chair is available within the accommodation. The gap between the sofa and the wall is approx. 140 cm wide and there is space within the lounge area for a wheelchair.

The dining table has an adapted position that provides sufficient knee space for a guest using a wheelchair and is located behind the lounge area.



Kitchen

The hob is located above the oven. The oven is electric and has a door that opens to the side.

There is a work surface at a height of 85 cm. The free-standing microwave, toaster and kettle are on this work surface to assist with access. There are sufficient floor-based cupboards to provide accessible storage. You may need to move what you decide is needed into these cupboards to provide accessible storage. However, there are also wall mounted cupboards which are not accessible from a wheelchair. The tap for the sink is on the nearest side for the user. The fridge is at a lower level. There is work surface height sockets. The kitchen turning circle is approx. 235 cm x 165 cm.



Accessible bedroom

Is provided with one Bakare Volker 3080 adjustable bed there is space beneath the adjustable bed to allow a hoist to be used at the bed. A portable hoist is **not** provided within the accommodation. If one is required Center Parcs will arrange for the hire of a hoist at no extra cost, please contact us in advance of your stay to make arrangements. The bed transfer can be from the left or the right-hand side. There is an emergency pull cord next to each bed.

The bedroom door opening is 90 cm. There is a TV in this room and a small bedside table next to the bed which measures 72cm from the floor. The wardrobe rail height is 144 cm from the ground.

The emergency door from the bedroom is 90 cm and is opened by a push handle. The emergency door also provides access to the patio area.



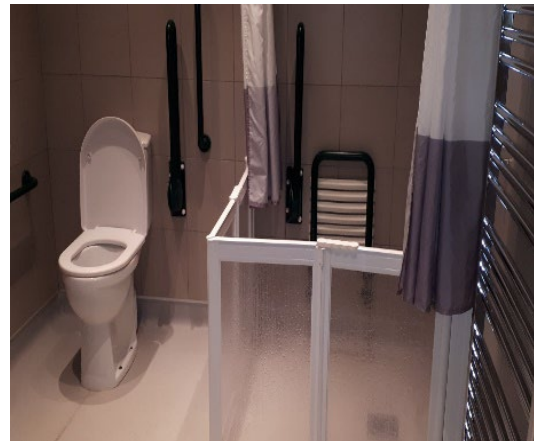
En-suite adapted bathroom

The accessible en-suite bathroom provides an accessible shower and flip down seat which is at the height of 57 cm, hand basin and toilet.

The toilet is right hand transfer. The toilet seat height is 55 cm the distance between the toilet and the sink is 40 cm and the sink height is 83 cm. The shower transfer is from the left or the right-hand side. The shower head height can be adjusted.

An emergency pull cord is located next to the toilet and the shower.

The turning circle in the bathroom is approx. 130 x 115cm



48 Moorland View

48 Beechwood provides accessible single storey exclusive accommodation with three bedrooms.

The makeup of this lodge provides one fully accessible bedroom & bathroom, accessible living accommodation and kitchen, one standard double with TV and en-suite bathroom and one standard twin room with TV and en-suite shower room.

Emergency alarms are audible throughout the lodge but are not connected to a central location.

The facilities provided are sufficient for six adults.

Parking

Designated accessible parking is provided in front of the lodge for one vehicle.



Access

There is access for guests using wheelchairs throughout the accommodation, the door to the entrance of the lodge is 90 cm and the chain height is 173 cm.

There is level access to the patio via the accessible bedroom.

Living area

There is seating for six in the lounge area. There is also space within the lounge area for a person using a wheelchair to remain seated in their wheelchair. Also available is a high seated firm chair within the accommodation. The gap between the sofa and the wall is approx. 155 cm wide.

The dining table provides sufficient knee space for a guest using a wheelchair and is located behind the lounge area.



Kitchen

The hob is at a standard height, the oven is electric and has a side opening door.

There is a work surface at 75 cm. The free-standing microwave, toaster and kettle are on this work surface to assist with access. There are sufficient floor-based cupboards to provide accessible storage. You may need to move what you decide is needed into these cupboards to provide accessible storage. However, there are also wall mounted cupboards which are not accessible from a wheelchair. The tap for the sink is on the nearest side for the user. The fridge is at a lower level. The kitchen has a turning circle of approx. 230 cm x 165 cm.



Accessible bedroom

Is provided with one single bed and one Bakare Volker 3082 adjustable bed there is space beneath the adjustable bed to allow a hoist to be used at the bed. A portable hoist is **not** provided within the accommodation. If one is required Center Parks will arrange for the hire of a hoist at no extra cost, please contact us in advance of your stay to make arrangements.

The bedroom door opening is at a width of 80 cm and the emergency door opening is at the width of 90 cm with a push bar handle.

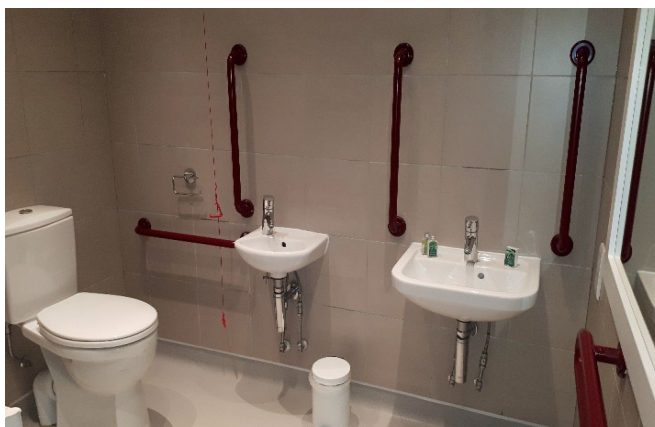
There is a TV provided in this room, and the wardrobe rail height is 145 cm.



En-suite adapted bathroom

The accessible en-suite bathroom provides an accessible shower and flip down seat which is at the height of 47 cm, hand basin and toilet.

The toilet is left hand transfer. The toilet seat height is 59 cm and the distance between the toilet and the sink is 41 cm and the sink height is 72 cm. The shower transfer is from the left-hand side. The shower head height can be adjusted and there is an emergency pull cord located next to the shower and the toilet.



Sauna

The sauna has level access and door width of 75cm. Wheelchairs with metal fittings will become sufficiently hot to burn in the sauna. Guests should be able to transfer from their wheelchair in order to use the facilities.

The sauna seat height is 68 cm.